

UTOVARIVAČ TOČKAŠ WHEEL LOADER

ULT-160 DE

Snaga na zamajcu Power at Flywheel	121 kW/165 KS/HP
Radna težina Operating Weight	13960 kg
Kapacitet kašike Buckets Capacity	2,30 - 3,6 m ³
Brzina Speed	0-50 km/h



IMK  14. oktobar

MOTOR

Proizvođač i model: CUMMINS QSB 6.7 - TIER 3
Dizel, 4-taktni vodom hlađeni, sa direktnim ubrizgavanjem, sa turbokompresorom
Broj cilindara 6
Prečnik cilindra/hod klipa: 107/124 mm
Ukupna radna zapremina: 6700 ccm
Stepen kompresije: 17,2 : 1
Maksimalna izlazna neto snaga na zamajcu (ISO 9249): 121 kW (165 KS) pri 2000 o/min.
Maksimalni moment: 946 Nm pri 1400 o/min
Težina motora: 485 kg
Količina rashladne tečnosti u motoru 10 lit

ELEKTRIČNA INSTALACIJA

Napon 24 V
Akumulator (redna veza) 2 x 12 V
- kapacitet 2 x 135 Ah

TRANSMISIJA

Hidrodinamička POWER SHIFT transmisija, pretvarač obrtnog momenta i planetarni menjač sa elektrohidrauličnim komandama pod opterećenjem.

Maksimalne brzine kretanja (standardne gume)

Brzine	Napred	Nazad
1	0-5 km/h	0-5 km/h
2	0-12 km/h	0-12 km/h
3	0-28 km/h	0-28 km/h
4	0-50 km/h	0-50 km/h

POGONSKI MOSTOVI

Pogon na sva četiri točka. Redukcija preko planetarnih zupčanika. Ugao klaćenja zadnjeg mosta $\pm 15^\circ$.

KOČNICE

Glavna kočnica: diskosna na sva četiri točka
Komandovanje hidraulično i to:
pedalom za normalno kočenje u drumskoj vožnji,
pedalom i uključivanjem prekidača za automatsko isključivanje menjača, pri čemu celokupna snaga motora stoji na raspolaganju
Ručna (parking) kočnica hidraulična, opružno akumulaciona sa dejstvom na vratilo prednjeg pogona

PNEUMATICI

Tip Tubeless
standarden gume 20,5 25/16PR (L₂)

ENGINE

CUMMINS, model QSB 6.7 - TIER 3, 4-stroke water cooled diesel engine directly injected,
Number of cylinder 6
Diameter piston /stroke 107/124 mm
Total operating capacity 6700 ccm
Compression ratio: 17,2 : 1
Max output power at net power flywheel 121 kW (165 HP) at 2000 rpm (ISO 9249).
Max torque 946 Nm at 1400 rpm
Engine weight: 485 kg
Coolant quantity in engine 10 lit

ELETRIC INSTALLATION

Voltage 24 V
Batteries (series connection) 2 x 12 V
- Capacity 2 x 135 Ah

TRANSMISSION

Hydrodynamic transmission POWER SHIFT, torque converter and planetary gearbox with electric-hydraulic control under load.

Maximal movement speed (standard tyres)

Speed	Forward	Bacward
1	0-5 km/h	0-5 km/h
2	0-12 km/h	0-12 km/h
3	0-28 km/h	0-28 km/h
4	0-50 km/h	0-50 km/h

DRIVE AXLES

Four wheel drive. Reducing through planetary gears. Rear axle swinging angle $\pm 15^\circ$.

BRAKES

Main brake: disc on each four wheel
Hydraulic control as follows;
By pedal for usual braking on the road
By pedal and with automatic gearbox switching, for which total engine power is on disposal
Handy (parking) hydraulic brake, with spring interaction on front drive shaft

PNEUMATICS

Type Tubeless
Standard tyres 20,5 25/16PR (L₂)

HIDRAULIČNI SISTEM

Rezervoar ulja sa finim prečistačem u povratnom vodu i grubim prečistačem u usisnom vodu sa kontrolom podpritiska i nadpritiska.

Pumpa radnog pritiska zupčasta
Protok pumpe na 2000 o/min 260 l/min
Regulisani pritisak u instalaciji 140 bar
Razvodnik (servokomandovan) trosekcijski
Servo-razvodnik sa dve ručice

HIDRAULIČNI CILINDRI

Za dizanje strele 2 kom
Prečnik/hod klipa 150/845 mm
Za okretanje kašike 2 kom
Prečnik/hod klipa 125/580 mm

KAPACITET DIZANJA (STANDARDNA KAŠIKA)

Kašika na tlu 13000 kg
Kašika u najvišem položaju 6000 kg
Sila kidanja 14200 daN

VREME TRAJANJA OPERACIJE

Dizanje strele 7 s
Spuštanje strele 5,6 s
Zatvaranje kašike 1,4 s
Istresanje kašike 1,5 s

UPRAVLJANJE

Hidrostatičko "LOAD-SENSING" sa zglobnom šasijom.

Ugao zaokretanja šasije $\pm 35^\circ$
Minimalni radijus zaokreta (preko gume).....5758 mm
Pumpa upravljača zupčasta
Protok pumpe na 2000 o/min 107 l/min
Maksimalni radni pritisak 175 bar
Hidraulični cilindri za upravljanje 2 kom
Prečnik/hod klipa 70/454 mm
Rezervna pumpa upravljanja
Protok pri brzini iznad 20 km/hcca. 50 l/min

KABINA

Zaštitna konstrukcija od prevrtanja ROPS (ISO 3471). Zaštitna konstrukcija od padajućih predmeta FOPS (ISO 3449). Standardno izvođenje uz ograničenje spoljnje temperature od 265K (-8° C). Kabina je izolovana od toplote, buke i vibracija.

TEŽINA

Napred 6 730 kg
Nazad..... 7 230 kg
Ukupno (bez rukovaoca i tereta u kašici) 13 960 kg

HYDRAULIC SYSTEM

Oil tank with fine filter subtraction in rude filter in intake line on under pressure and above pressure control.

Working attachment pump..... gear pump
Pump flow 2000 rpm 260 l/min
Regulated pressure in working attachment ..140 bar
Distributor (servo controlled) three section
Servo-distributor with two arms

HYDRAULIC CYLINDERS

For boom lift up.....2 pcs
Diameter/piston stroke 150/845 mm
For turn over bucket 2 pcs
Diameter/piston stroke..... 125/580 mm

LIFT UP CAPACITY (STANDARD BUCKET)

Bucket on ground 13000 kg
Bucket on lowest position 6000 kg
Breakout force 14200 daN

OPERATION TIME

Boom lift up 7 s
Boom put down 5,6 s
Bucket closing 1,4 s
Bucket dumping 1,5 s

STEERING

Hydrostatic "LOAD-SENSING" with articulated chassis

Chassis turning angle $\pm 35^\circ$.
Minimal turning radius (over tyres) 5758 mm
Steering pump geared
Pump delivery at 2000 rpm 107 l/min
Maximal operation pressure 175 bar
Hydraulic control cylinders..... 2 pcs
Diameter/piston stroke 70/454 mm
Spare steering pump
Flow at speed over 20 km/h cca 50 l/min

CAB

Turn over protection construction ROPS (ISO 3471). Fall down protection construction FOPS (ISO 3449). Standard performance with limitation on outer temperature of 265 K (-8° C). Cab is isolated of thermal influence, noise and vibration.

WEIGHT

Forward 6 730 kg
Backward..... 7 230 kg
Total (without operator and load in bucket) 13 960 kg

ULJE - GORIVO

Ulje za podmazivanje (motora)	23 l
Rashladna tečnost	50 l
Ulje u menjaču i reduktoru	47 l
Ulje u prednjem i zadnjem pogonskom mostu:	
Diferencijali	19+14 l
Planetarni reduktor	2x4 + 2x3,5 l
Ulje u hidrauličnoj instalaciji	210 l
Ulje u sistemu za kočenje	4 l
Rezervoar za gorivo	230 l

STANDARDNA OPREMA

Prednje svetlo: dugo, kratko, poziciono 2 kom

RADNO SVETLO

napred na krovu kabine	2 kom
nazad na karoseriji	2 kom

SIGNALIZACIJA je izvedena prema propisima o saobraćaju za vožnju po javnim saobraćajnicama, a čine je: pokazivači pravca, stop svetla, poziciona svetla, upozoravajuće svetlo i rotaciono svetlo.

KONTROLNE LAMPE pritiska ulja motora, alternatora, pokazivača pravca, upozoravajućeg svetla, dugog svetla, oborenog svetla, ručne kočnice, pokazivača protoka rezervne pumpe upravljača, zaprljanosti prečistača vazduha motora, punjenja hidrauličnih akumulatora i zaprljanosti filtera ulja hidraulike.

INSTRUMENTI:

Road relay 4 za praćenje rada motora
Manometar za kontrolu pritiska ulja u menjaču
Termometar za kontrolu temperature ulja pretvarača obrtnog momenta
Termometar za kontrolu temperature hidrauličnog ulja

KABINA

Kabina je zaptivena i opremljena integralnim sistemom za grejanje i provetravanje filtriranim vazduhom pod nad pritiskom. Usmeravanjem toplog vazduha omogućava se odmrzavanje prednjeg vetrobranskog stakla. Sa brisačima i sistemom za pranje vetrobranskog stakla, rukovanje utovarivačem znatno je olakšano u nepovoljnim vremenskim uslovima. Sedište rukovaoca je snabdeveno sigurnosnim pojasem. Položaj instrument table sa svetlosnim signalima i položaj komandi vidno smanjuju napor rukovaoca u radu.

ALAT I PRIBOR

Komplet alata i pribora.

KAŠIKA

Kašika sa "V" nožem

2,3 m ³ (SAE)

OIL- FUEL

Oil for lubrication (engine)	23 l
Coolant in cooling system	50 l
Oil in gearbox and reduction gear	47 l
Oil in front and rear drive axle:	
Differentials	19+14 l
Planetary gearbox	2x4 + 2x3,5 l
Oil in hydraulics installation	210 l
Oil in brake system	4 l
Fuel tank	230 l

STANDARD EQUIPMENT

Front light: long, normal, positional..... 2 pcs

OPERATION LIGHT

forward on the cab top	2 pcs
backward on body	2 pcs

SIGNALLING is performed acc. to the rules in traffic for driving on public roads and consist of: turn signals, stop light, position light, warning light and rotation light.

CONTROL LAMPS engine oil pressure, alternator, turn signals, warning light, long light, normal light, parking brake, steering spare pump indicator and engine air filter, and engine air filter dirty indicator, accumulator fill in and mud in hydraulic oil.

INSTRUMENTS:

Road relay 4 for engine operation monitoring
Manometer pressure oil control in gearbox
Thermometer for control temperature oil torque converter
Thermometer for control temperature hydraulic oil.

CAB

Cab is sealed and equipped with integral system for heating, ventilation by filtered air under sub pressure. Directing of warm air enables defrosting of front windshield glass. With windshield wipers and system for washing, operation of loader is much easier under bad weather conditions. Operator seat is equipped with safety belt. Position of instrument panel with light signals and position of controls reduce significantly the effort of operator during work.

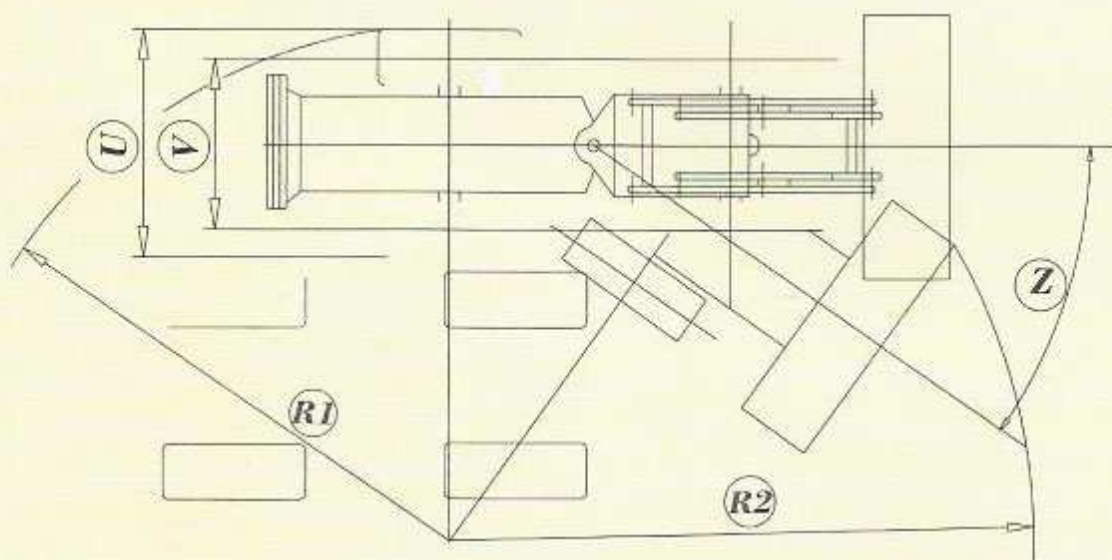
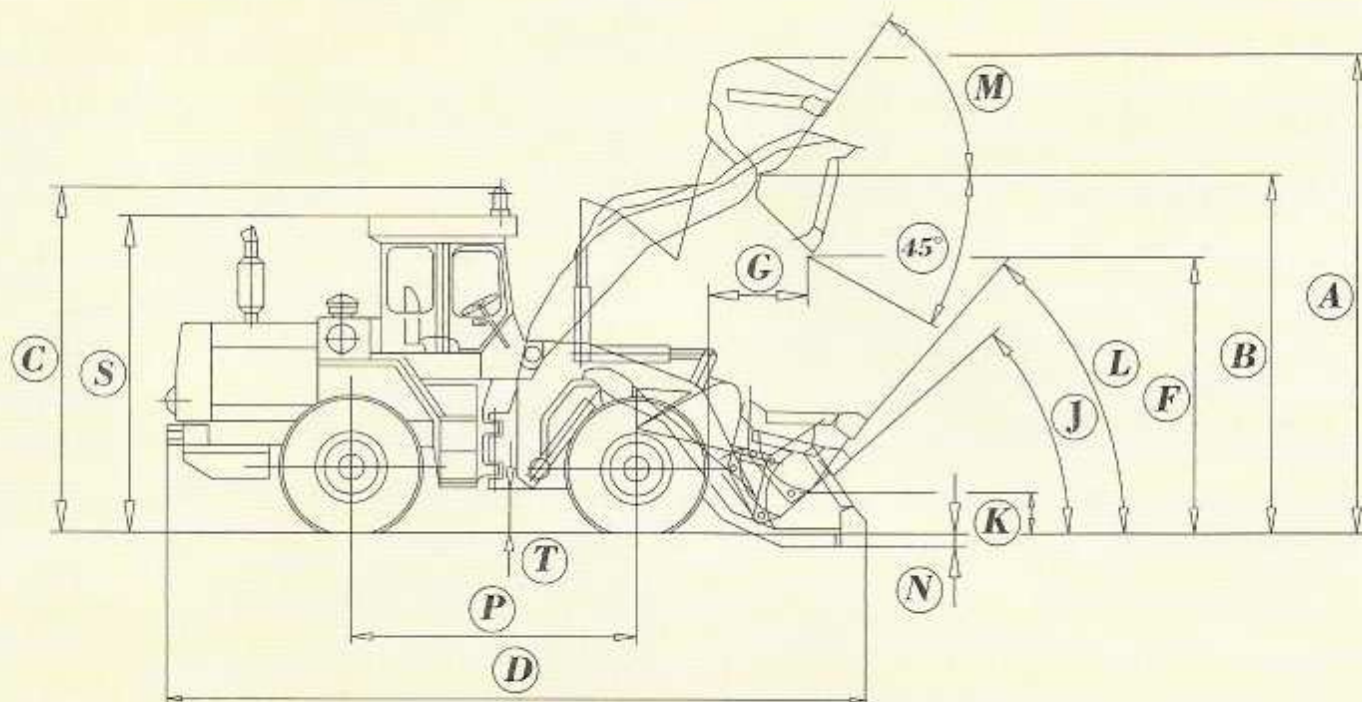
TOOLS AND ACCESSORIES

Tools and accessories assy.

BUCKET

Bucket with "V" blade

2,3 m ³ (SAE)



Maksimalna radna visina* Max operating height	mm	A	5005	Dubina kovanja Digging depth.	mm	N	145
Maksimalna visina zgloba kašike Max bucket joint height	mm	B	3685	Osovinski razmak Basic distance	mm	P	2850
Maksimalna visina mašine Max machine height	mm	C	3570	Visina krova kabine Cab roof height	mm	S	3355
Maksimalna dužina mašine* Max machine length	mm	D	6950	Klirens Ground clearance	mm	T	450
Maksimalna visina istresanja* Max dumping height	mm	F	2800	Širina preko guma Width over tyres	mm	U	2608
Dohvat na maksimalnoj visini* Reach on max height	mm	G	1008	Kolotrag Wheelbase	mm	V	2030
Ugao zatvorene kašike na tlu Closed bucket angle on ground	°	J	42	Ugao zaokretanja šasije Chassis turnover angle	°	Z	35
Visina zgloba kašike u transportnom položaju Bucket joint height in transportation	mm	K	380	Minimalni radijus zaokreta do guma Min radius of tyres turnover	mm	R1	5866
Ugao zatvorene kašike u transportnom položaju Closed bucket angle in transportation	°	L	46	Minimalni radijus zaokreta do vrha kašike u transportnom položaju* Min radius turnover to the bucket top in transportation	mm	R2	6249
Ugao zatvorene kašike na max visini Closed bucket angle on max height	°	M	54	Maksimalna spoljna širina kašike* Max outer bucket width	mm	-	2630

* Za standardnu kašiku 2,3 m³

* For standard bucket 2,3 m³

DODATNA OPREMA

Univerzalna kašika 2,3 m³ (SAE)
Kašika za kamen 1,53 m³ (SAE)
Kašika za lake materijale..... 3,0 m³ (SAE)
Kašika za repu 3,5 m³ (SAE)
Kašika za repu (rešetkasta)..... 3,6 m³ (SAE)
Plužni čistač snega
Ravna daska za sneg
Sučeoni hvatač balvana

BRZORASTAVLJAJUĆA PLOČA (BP)

Kašika sa "V" nožem za BP 2,3 m³ (SAE)
Kašika za lake materijale za BP 3,0 m³ (SAE)
Viljuškasti nosač plaeta BP
Kranska ruka za BP
Grabilica silaže za BP
Mimoilazni hvatač balvana za BP

KLIMA UREĐAJ

Klima uređaj na krovu kabine

OPTIONAL EQUIPMENT

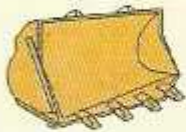
Universal bucket 2,3 m³ (SAE)
Bucket for rocks 1,53 m³ (SAE)
Bucket for light materials 3,0 m³ (SAE)
Bucket for sugar beet 3,5 m³ (SAE)
Bucket for sugar beet (grid) 3,6 m³ (SAE)
Plough snow cleaner
Snow blade
Butt log fork

FAST DETACHABLE PLATE (DP)

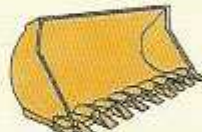
Bucket with "V" blade for DP 2,3 m³ (SAE)
Bucket for light materials for DP... 3,0 m³ (SAE)
Fork support for fast detachable plate DP
Crane arm for DP
Silage fork for DP
Cross log fork for DP

AIR CONDITIONER

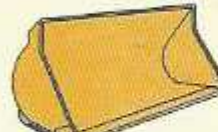
Air conditioner on cab top



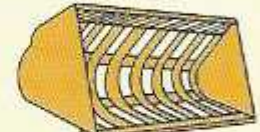
Kašika sa "V" nožem
Bucket with "V" egde



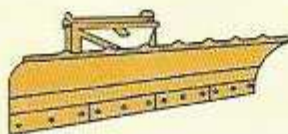
Univerzalna kašika
Universal bucket



Kašika za repu
Bucket for sugar beet



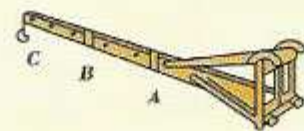
Kašika za repu (rešetkasta)
Bucket for sugar beet (grid)



Ravna daska za sneg
Snow blade



Brzo rastavljajuća ploča
Fast detachable plate



Kranska ruka
Crane hook

IMK "14.oktobar" a.d. Srbija 37000 Kruševac, ul. Jasički put br. 2
IMK "14.oktobar" a.d. Serbia 37000 Kruševac, Str. Jasički put No. 2

Tel. 037/421-502 Fax. 037/429-653 E-mail: office@14-oktobar.co.rs www.14-oktobar.co.rs
Phone +381-37-421-502 Fax. +381-37-429-653 E-mail: office@14-oktobar.co.rs www.14-oktobar.co.rs